



*ELIE M. BARADHY & ASSOCIATES*  
*MEP Building Services Consultants*

Tel: + 961 1 291093, Fax: + 961 1 291095, Beirut, Lebanon  
ebaradhy@cyberia.net.lb, elie@embassociates.com, www.embassociates.com



*ELIE M. BARADHY & ASSOCIATES*  
*MEP Building Services Consultants*

Tel: + 961 1 291093, Fax: + 961 1 291095, Beirut, Lebanon

[ebaradhy@cyberia.net.lb](mailto:ebaradhy@cyberia.net.lb), [elie@embassociates.com](mailto:elie@embassociates.com), [www.embassociates.com](http://www.embassociates.com)





Bole Tower, Ethiopia



## Vision

## Field of Action

## Experience

## Quality

## Professional Involvement

## Tools

## References

Elie M. Baradhy & Associates is a leading MEP design company that utilizes up to date science, technology and know how in the design, development and application of all types and sizes of MEP building services of any occupancy and utilization, using all the updated engineering tools that are related to this field.

Providing the client all the technical support, advice and development of the tender document files to satisfy all the MEP engineering needs to equip the building with state of the art MEP services.





Military Institute Turkmenistan



Cultural Center , Turkmenistan



Vision

Field of Action

Experience

Quality

Professional  
Involvement

Tools

References

Elie M. Baradhy and Associates is an active group of engineers, professionally involved in the study, design, application, diagnostic, supervision, follow up and development of all MEP building services, that include but not limited to:

- 1- HVAC
- 2- Plumbing
- 3- Fire Fighting
- 4- Smoke Management
- 5- Water Treatment
- 6- Electrical Lighting and power
- 7- Electrical Generation Systems
- 8- Electrical Low Current Systems that includes:
  - a- Fire alarm system
  - b- Data system
  - c- Telephone system
  - d- CCTV and CATV system
  - e- Intruder alarm system





Fairy Tale, Amusement park, Turkmenistan

Vision

Field of Action

Experience

Quality

Professional  
Involvement

Tools

References

Elie M. Baradhy and Associates is formed by a team of mechanical and electrical engineers with very long experience in the consulting, study, design, application and construction of all types of MEP building services.

The leader of the team holds more than 50 years of experience, whereas the senior engineers hold more than 10-15 years.

Field of Experience :

- Hotels
- Office buildings
- Hospitals
- Retail outlets
- Malls
- High rise towers of any occupancy
- Sports buildings
- Assembly buildings
- Cultural buildings
- Restaurants
- Residential of any type and size.
- Education





Trade Center and Mall, Turkmenistan

Vision

Field of Action

Experience

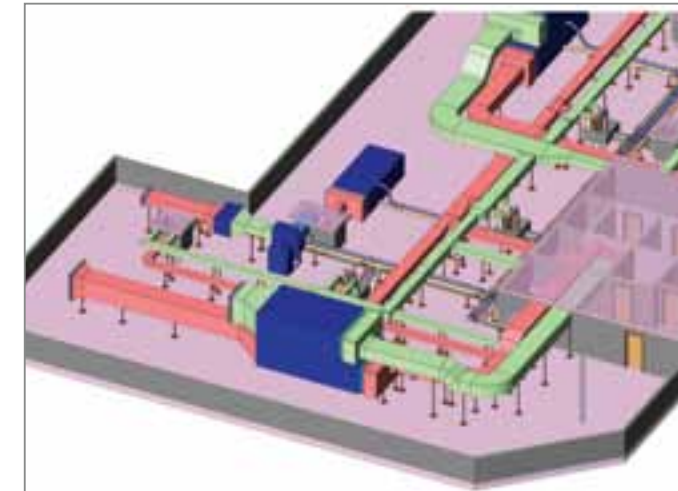
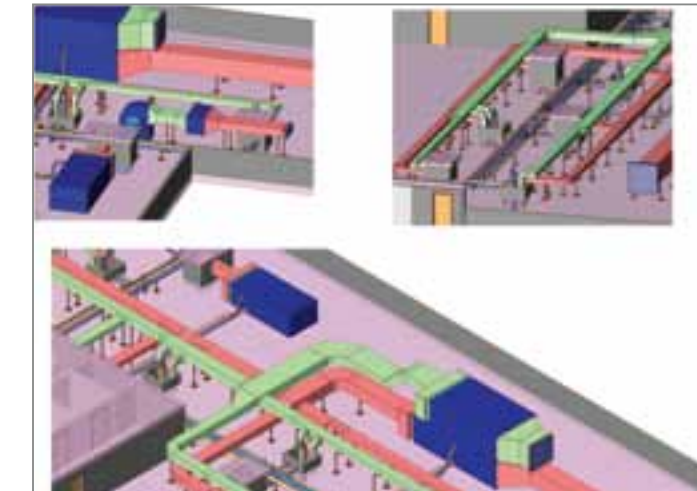
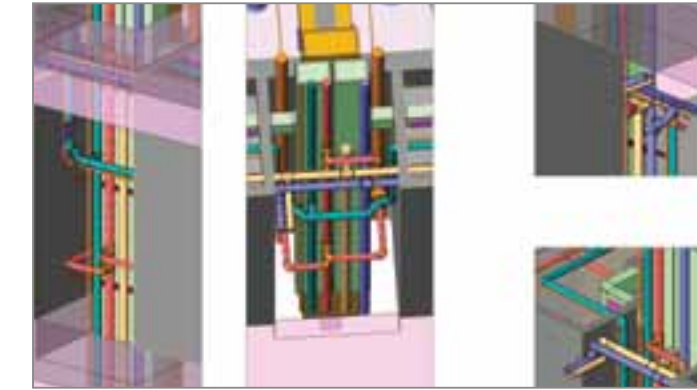
**Quality**

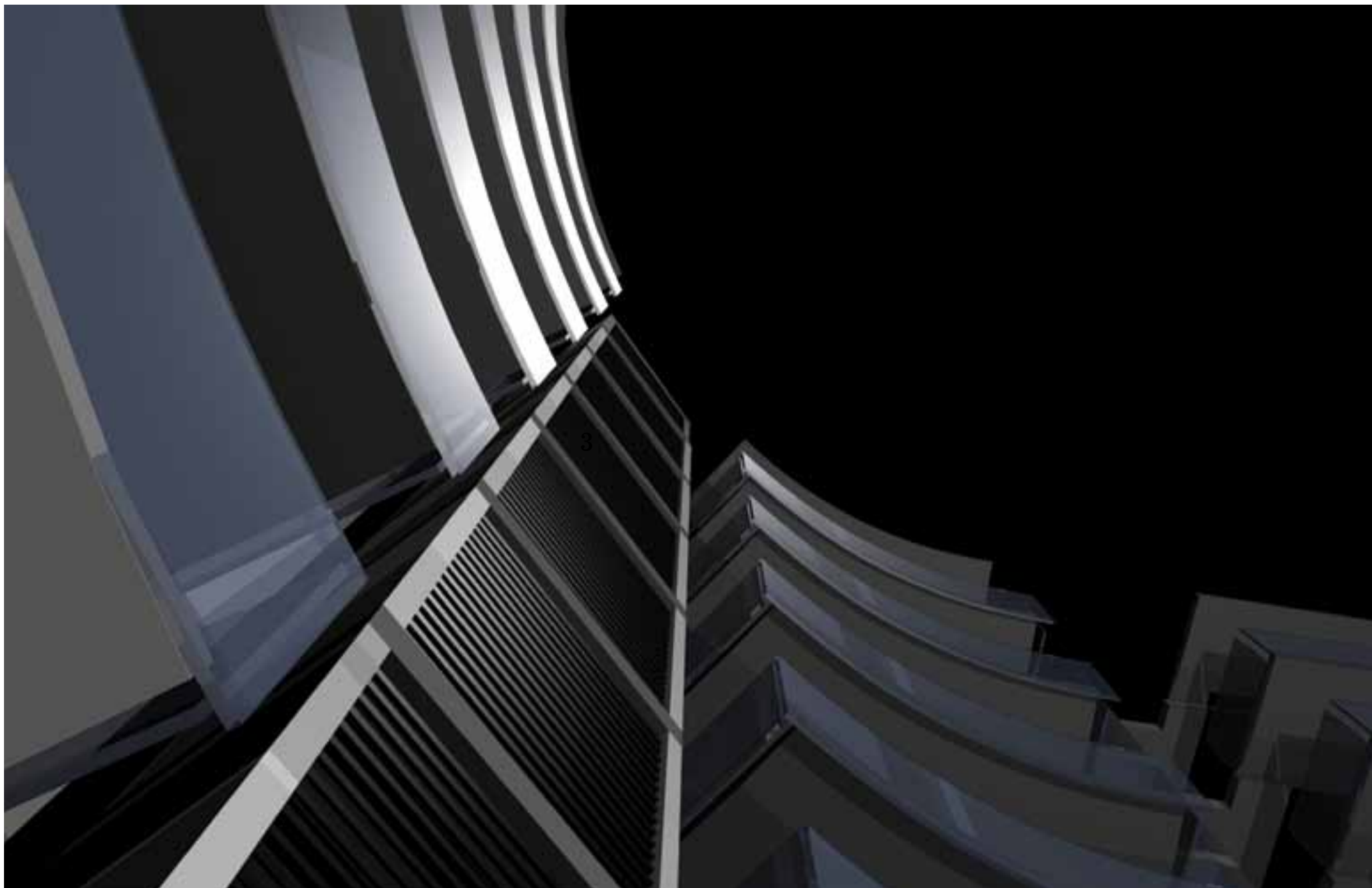
Professional  
Involvement

Tools

References

Concept... Quality... Professionalism...





Vision

Field of Action

Experience

Quality

Professional  
Involvement

Tools

References



Elie M. Baradhy and Associates group is engaged in several international engineering societies and authorities membership such as:

- American Society of Heating, Refrigerating and Air Conditioning Engineers – ASHRAE – USA.
- American Society of Mechanical Engineers – ASME- USA.
- American Society of Plumbing Engineers – ASPE– USA.
- National Fire Protection Association – NFPA– USA.
- Society of Fire Protection Engineers – SFPE– USA.
- International Code Council – ICC– USA.
- Institute of Electrical and Electronic Engineers – IEEE–USA.
- Chartered Institute of Building Services Engineers – CIBSE – UK.





African Union Hotel

Vision

Field of Action

Experience

Quality

Professional

Involvement

Tools

References

Elie M. Baradhy and Associates use in their daily practice up-to-date engineering tools to assist them in their design and file development practice, such as:

- All types of calculation and sizing software, specification writing and equipment selection, genuine versions, fully updated.
- All US building codes and standards, fully yearly updated.
  - ASHRAE
  - ICC
  - NFPA
  - UBC
- All European buildings codes and standards, fully yearly updated.
  - NF
  - BS
  - EN
  - IEC
  - DIN
  - SNIP
- A complete updated library of Electro-mechanical handbooks and references.





Eko Tower, Nigeria



Ocean Wind



Eko Guest House, Nigeria

Vision

Field of Action

Experience

Quality

Professional

Involvement

Tools

References

Some Main Jobs Involvement in Design, Execution and Commissioning:

- Lebanese Parliament Building, 1982.
- Tripoli Governmental Hospital, 1985.
- Faraya Residential Complex, 1986-87.
- President A. Jmayel Residence, Bikfaya, 1987.
- Dahr El Bashek Governmental Hospital, 1987.
- Armenian Catholicossat Museum Building, 1990.
- SNBSL Bank Building, Riad El Solh, 1991.
- SNBSL Bank Building, Marfaa, 1994.
- Commerce and Finance Building, Qantary, 1995.
- Casino Du Liban, Phase I & II, (Consultant to the main Contractor, Almabani) 1996-98.
- Libancell Building, Marfaa, 1997.
- SNA Building, Hazmieh, 1996-97.
- Al Bustan Hotel Beit Meri, Renovation Works 1996 till now.
- Phoenicia Hotel Renovation: HVAC, Plumbing and Fire Fighting Design Check, 1999.
- Al Kafaat Handicap Rehabilitation Center and Hospital. 1998
- Phoenicia Hotel Operation: Consultancy and Trouble shooting on Electro-mechanical Systems. Year 2000 Till now.
- Quality Inn Hotel , Tripoly, Testing and Commissioning of HVAC system with Dar El Handassah, 2000.
- Mzaar 2000 Hotel Extension, 2001.
- SNBSL, Continuous Consultancy works from 1995 till 2003.
- Military Institute, Ashgabat Turkmenistan 16000m<sup>2</sup>, 2002/3 (with ARCREA France).
- Trade Center (Including Mall), Ashgabat, Turkmenistan, 30000m<sup>2</sup>, 2004/05 (With ARCREA France).
- Cultutal Center, Ashgabat, Turkmenistan, 55000m<sup>2</sup>, 2004/05 (With ARCREA France).
- Amusement Park, Ashgabat, Turkmenistan, 280000 m<sup>2</sup>, 2005 (With ARCREA France).
- Presidential Apartment, Ashgabat, Turkmenistan, 4000m<sup>2</sup>, (With ARCREA France), 2005.
- Bole Tower, Addis Ababa, Ethiopia, 2005.

Vision

Field of Action

Experience

Quality

Professional

Involvement

Tools

References

- Abou Jaoudeh Hospital Renovation Beirut, Lebanon, 2006.
- Tinapa Hotel Nigeria, 15000m<sup>2</sup>., 2006.
- Waves Project, Lagos Nigeria, Commercial building, 80000m<sup>2</sup>,2006/07.
- Icon 766 Project, Abuja Nigeria, Commercial building, 30000m<sup>2</sup>,2006/07.
- Ocean Wind Hotel, Lagos Nigeria, 5 Star 300 rooms hotel,2007.
- ATCL, Maameltain, Central Solar Hot water heating system, 2008.
- Jabal Al Kabah Hotel, KSA, 1800 Rooms Hotel, Shop Drawings,2008/09.
- ATCL, Indoor Swimming pool, 2009.
- Sheraton Hotel, Addis Ababa, Ethiopia, 2009.
- African Union Hotel, Addis Ababa, Ethiopia, 2009.
- Mellenium Hotel, Addis Ababa Ethiopia, 2009.
- Mzaar Intercontinental Hotel, Design of Sprinkler system and Atrium Smoke removal, 2009.
- EKO Tower, Lagos Nigeria, 2009.
- Warri Mall, Warri State Nigeria, 2010.
- Luxury Hotel, Lagos Nigeria, 2010/11.
- EKO Guest House 35000m<sup>2</sup>, Lagos, Nigeria, (With IOSIS France), 2011.
- Phoenicia Intercontinental, Consultancy works to the owner SGHL.
- Several Residential Buildings.
- Several medium and large size residential villas.
- Several Restaurants in Beirut City.
- Schools of medium to large size.